

PIECES POUR LE LUTH
PAR J. S. BACH

4085



BIBLIOTHEQUE ROYALE
DE BELGIQUE

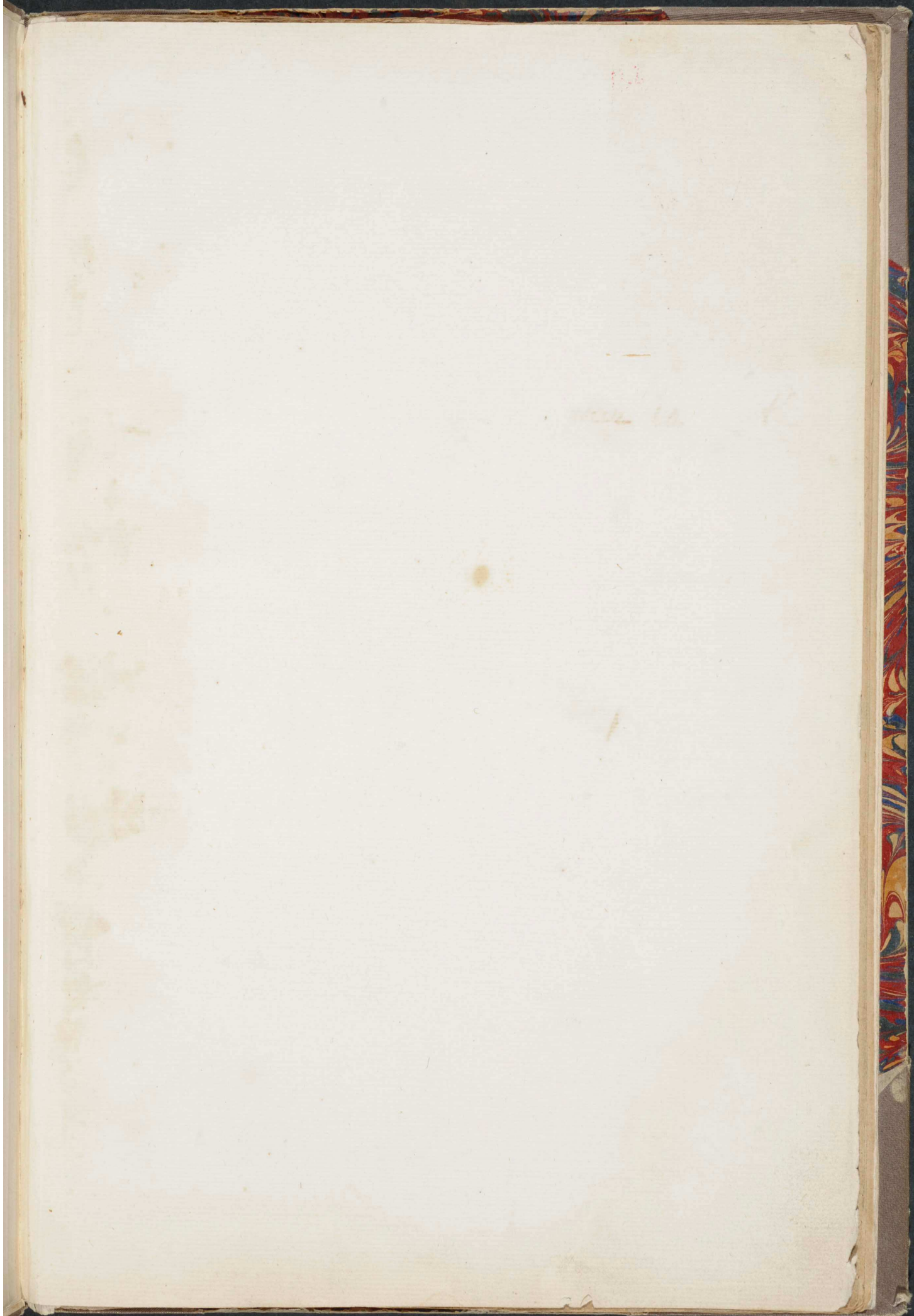
CABINET DES MANUSCRITS
FONDS GÉNÉRAL

Inv. No : **II 4085**

Cat. No **F 2910**

Format : **C**





pour la suite

à l'usage de

le 1er

F. 2910

Pièces pour la Luth

à

Monsieur Schouster

par

J. S. Bach.



+

Suite pour la Luth par J. S. Bach.

Prelude

trio

trio

Handwritten musical notation on a five-line staff. The notation includes various note values, stems, and beams. The word "דוד" is written above the staff in several places.

Handwritten musical notation on a five-line staff. The notation includes various note values, stems, and beams. The word "דוד" is written above the staff in several places.

Handwritten musical notation on a five-line staff. The notation includes various note values, stems, and beams. The word "דוד" is written above the staff in several places.

Handwritten musical notation on a five-line staff. The notation includes various note values, stems, and beams. The word "דוד" is written above the staff in several places.

Handwritten musical notation on a five-line staff. The notation includes various note values, stems, and beams. The word "דוד" is written above the staff in several places.

Handwritten musical notation on a five-line staff. The notation includes various note values, stems, and beams. The word "דוד" is written above the staff in several places.

Handwritten musical notation on a five-line staff. The notation includes various note values, stems, and beams. The word "דוד" is written above the staff in several places.

Handwritten musical notation on a five-line staff. The notation includes various note values, stems, and beams. The word "דוד" is written above the staff in several places.

Handwritten signature or initials at the bottom right of the page.

Handwritten musical notation on a five-line staff, featuring a treble clef and a key signature of one flat. The notation includes various rhythmic values and melodic lines.

Handwritten musical notation on a five-line staff, featuring a treble clef and a key signature of one flat. The notation includes various rhythmic values and melodic lines.

Handwritten musical notation on a five-line staff, featuring a treble clef and a key signature of one flat. The notation includes various rhythmic values and melodic lines.

Handwritten musical notation on a five-line staff, featuring a treble clef and a key signature of one flat. The notation includes various rhythmic values and melodic lines.

Handwritten musical notation on a five-line staff, featuring a treble clef and a key signature of one flat. The notation includes various rhythmic values and melodic lines.

Handwritten musical notation on a five-line staff, featuring a treble clef and a key signature of one flat. The notation includes various rhythmic values and melodic lines.

Handwritten musical notation on a five-line staff, featuring a treble clef and a key signature of one flat. The notation includes various rhythmic values and melodic lines.

Handwritten musical notation on a five-line staff, featuring a treble clef and a key signature of one flat. The notation includes various rhythmic values and melodic lines.

Handwritten musical score consisting of ten staves. The notation is dense and includes various rhythmic values, beams, and slurs. The ink is dark brown on aged, yellowish paper.

Volti.



Allemande

Handwritten musical notation on a five-line staff. It begins with a treble clef, a key signature of one sharp (F#), and a 3/4 time signature. The notation includes various note values, rests, and dynamic markings.

Courante.

Handwritten musical notation for a 'Courante' movement. It features a treble clef, a key signature of one sharp, and a 3/4 time signature. The notation is characterized by a rhythmic pattern of eighth and sixteenth notes.

Handwritten musical notation on a five-line staff, continuing the piece with various note values and rests.

Handwritten musical notation on a five-line staff, featuring a treble clef and a key signature of one sharp.

Handwritten musical notation on a five-line staff, featuring a treble clef and a key signature of one sharp.

Handwritten musical notation on a five-line staff, featuring a treble clef and a key signature of one sharp.

Handwritten musical notation on a five-line staff, featuring a treble clef and a key signature of one sharp.

Handwritten musical notation on a five-line staff, featuring a treble clef and a key signature of one sharp.

Sarabande

Handwritten musical score for Sarabande. The piece is written in two systems, each consisting of a treble clef staff and a bass clef staff. The notation is in a historical style, featuring many beamed notes and ornaments. The first system includes a treble clef staff with a key signature of one flat and a 3/4 time signature, and a bass clef staff. The second system continues the piece with similar notation.

Gavotte

Handwritten musical score for Gavotte. The piece is written in two systems, each consisting of a treble clef staff and a bass clef staff. The notation is in a historical style, featuring many beamed notes and ornaments. The first system includes a treble clef staff with a key signature of one flat and a 3/4 time signature, and a bass clef staff. The second system continues the piece with similar notation.

Handwritten musical notation for the first system, featuring a treble clef and a bass clef with rhythmic notation.

Handwritten musical notation for the second system, including the title "Gavotte" and "à la mode de Rouen".

Handwritten musical notation for the third system, continuing the piece with treble and bass staves.

Handwritten musical notation for the fourth system, showing rhythmic patterns in both staves.

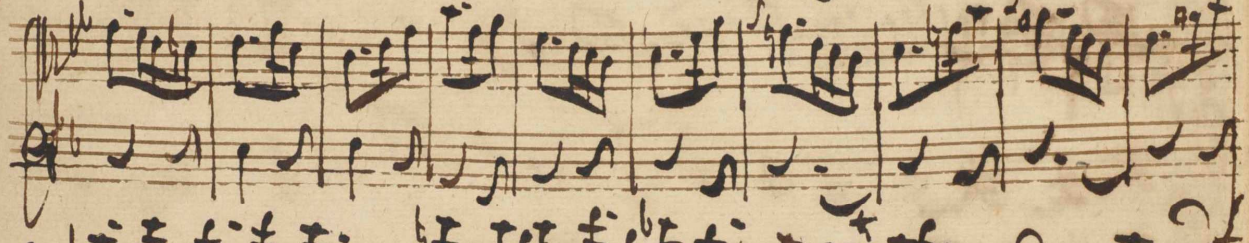
Handwritten musical notation for the fifth system, featuring a treble clef and a bass clef.

Handwritten musical notation for the sixth system, continuing the melodic and rhythmic development.

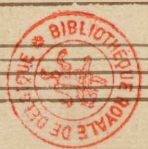
Handwritten musical notation for the seventh system, showing a continuation of the piece.

Handwritten musical notation for the eighth system, ending with the title "Gavotte" and "à la mode de Rouen".

Gigue $\frac{3}{8}$



Fin



الذات

الذات

الذات

الذات

الذات

الذات

الذات

الذات

الذات

الذات

الذات

الذات

الذات

الذات

الذات

الذات

Faint, illegible text bleed-through from the reverse side of the page, appearing as light brown markings.

