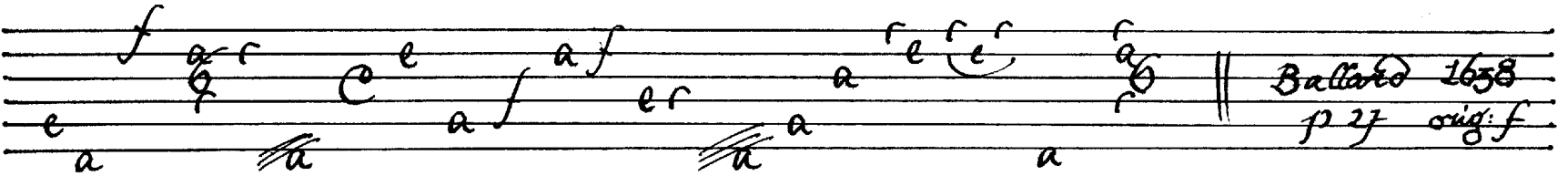
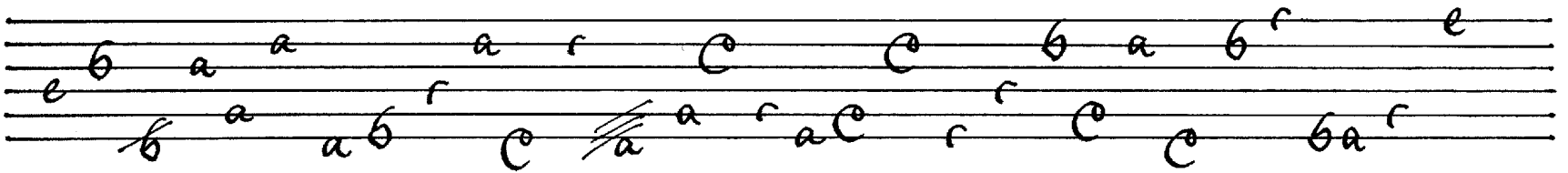
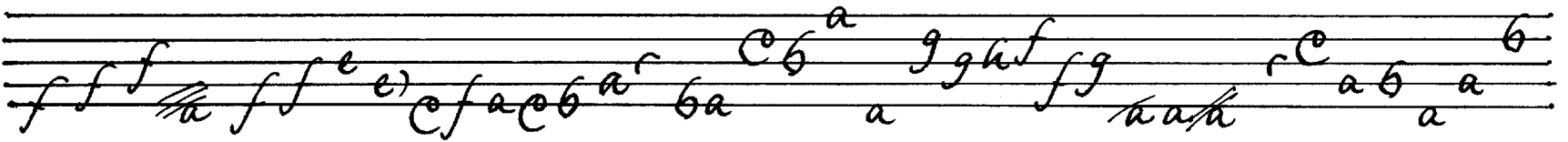
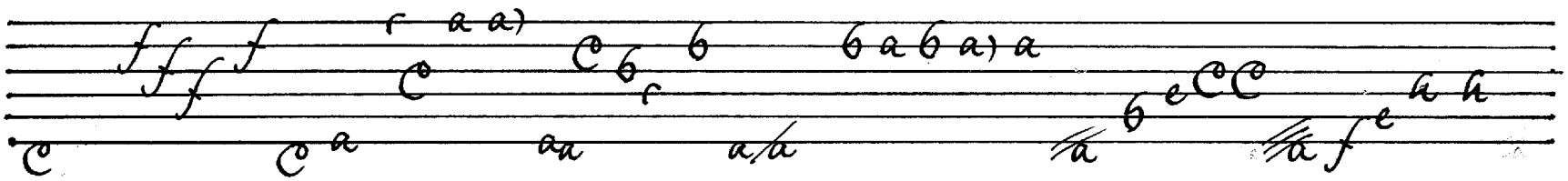
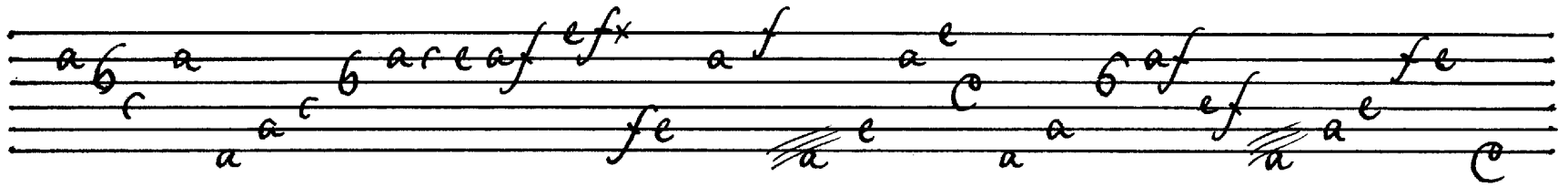


Pieces in G minor

François Dufaut

Prelude



Ballade 1658
p 27 orig: f

Tombeau de M. Blavrocher

Handwritten musical score for "Tombeau de M. Blavrocher". The score consists of seven staves of music. Above the staves are rhythmic markings (vertical lines with flags) indicating the timing of notes. The notes themselves are written below the staves, often with stems and flags. The notation includes various note values, rests, and dynamic markings such as "ff" and "f". The piece concludes with a double bar line and the text "Sarzenay I p. 189".

Courantes

I

II

Ritmo (f)
f. 122-3

Handwritten musical notation on a five-line staff. The notes are mostly quarter and eighth notes, with some rests. The lyrics 'a e e' are written below the staff. There are dynamic markings 'f' and 'ff'.

Handwritten musical notation on a five-line staff. The notes are mostly quarter and eighth notes. The lyrics 'a f a' are written below the staff. There are dynamic markings 'f' and 'ff'.

Handwritten musical notation on a five-line staff. The notes are mostly quarter and eighth notes. The lyrics 'a a e' are written below the staff. There are dynamic markings 'f' and 'ff'. The word 'Sargbunde' is written above the staff.

Handwritten musical notation on a five-line staff. The notes are mostly quarter and eighth notes. The lyrics 'a a a' are written below the staff. There are dynamic markings 'f' and 'ff'. There are some accidentals and slurs.

Handwritten musical notation on a five-line staff. The notes are mostly quarter and eighth notes. The lyrics 'a a a' are written below the staff. There are dynamic markings 'f' and 'ff'. There are some accidentals and slurs.

Handwritten musical notation on a five-line staff. The notes are mostly quarter and eighth notes. The lyrics 'a a a' are written below the staff. There are dynamic markings 'f' and 'ff'. The piece ends with a double bar line and the text 'Kreuzes G. f. 174'.

